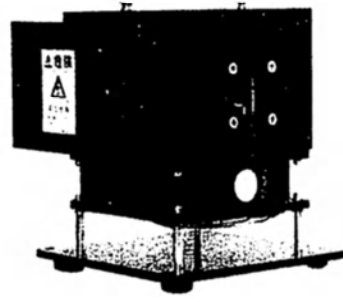
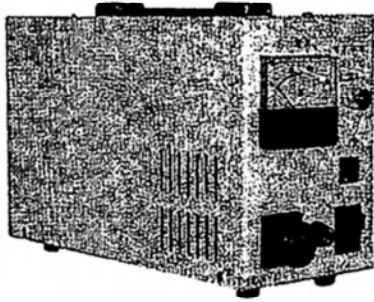


# PE·ILC CERMAX™

## High intensity Xe Illuminator System LX 175/300 Series

This system consists of compact Xe Illuminator of ILC Technology, USA, and the original Xe lamp power supply and the lamp house designed in Japan. The system can provide high performance illumination.



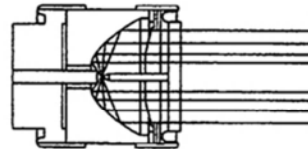
Perkin Elmer/ILC Technologies, LX series illuminator is a compact, high intensity and very long lifetime Xe lamp.

The reflection mirror is in shape of parabola, and it can emit a nearly parallel beam through sapphire window. It can be applied in photos, medical, and portable optics.

CERMAX  
XE Illuminator

Parallel : LX125/LX175/LX300/LX500C/LX1000C(F-UVカット型、UV-UV強化型)  
Condense : EX125/EX175/EX300/EX500/EX1000(F, UV)

	LX175F	LX175UV	LX300F	LX300UV
Maximum intensity	: 350×10 <sup>3</sup> candels	330×10 <sup>3</sup> candels	515×10 <sup>3</sup> candels	460×10 <sup>3</sup> candels
Total irradiance	: 25 watts	25 watts	50 watts	50 watts
UV irradiance (UV<390 nm)	: 1.2 watts	3.5 watts	2.6 watts	6.6 watts
IR irradiance (IR>770 nm)	: 14 watts	13 watts	28.8 watts	26.8 watts
Visible flux (390–770 nm)	: 2200 lumens	2000 lumens	5000 lumens	4500 lumens
Color temperature	: 5600° K	5050° K	5600° K	5050° K
Spread angle (0/100/1000hours)	: 4.5° / 5° / 6°		: 5° / 6° / 7°	
Rating Lamp input	: Rating 175 watts Range 150~200W)		Rating 300 watts Range 180~320W)	
Lamp current (DC)	: Rating 14 amps Range 12~16A)		Rating 21 amps Range 10~22A)	
Lamp voltage (DC)	: Rating 12.5 volts Range 11~14V)		Rating 14 volts Range 13~16V)	
Arc distance	: 1.14 mm		: 1.24 mm	
Output window size	: φ 25.4 mm		: φ 25.4 mm	
Lamp lifetime	: Average 1000 hours Warranty 500 hours			



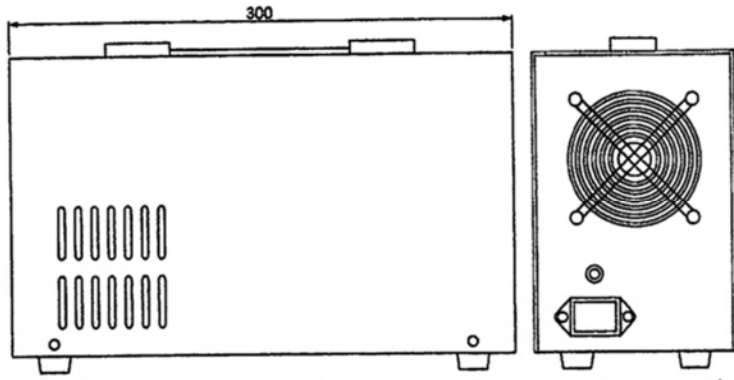
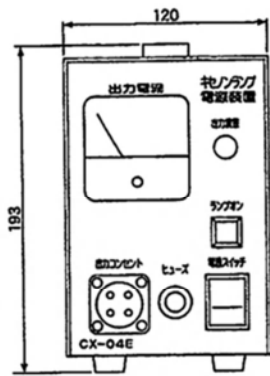
Pecell Technologies, Inc.

1614 Kurogane-cho, Aoba, Yokohama, 225-8503, Japan  
TEL: +81-45-974-5118, FAX: +81-45-974-5657

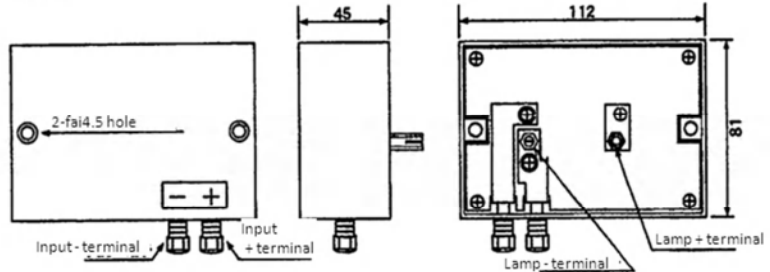
**Xe Illuminator  
Stabilized power supply  
CX-04E**

Input voltage : Single phase AC190V-240V 50/60  
Power consumption: MAX400VA (300W output)  
Inrush current: less than 30A  
Output stabilizing:  
Switching Regulator constant current

Output current: DC8A-22A variable  
Power consumption: MAX300W  
Current Stability: within 5% (against input20%)  
Current ripple: less than 300 mA (when current 22A)  
Size, Weight: W120/H193/D300, 5 kg

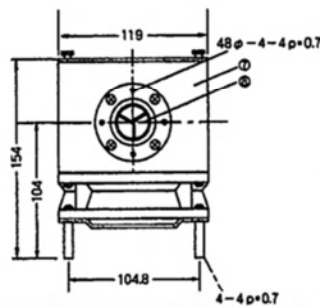
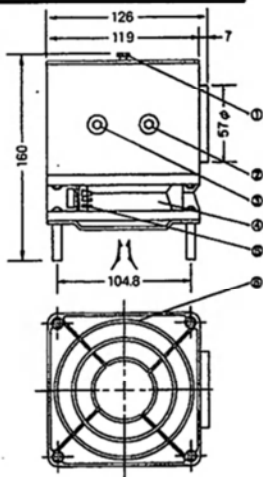


**Igniter (Equipped with the Lamp house)**  
Operation Voltage: DC100V - 150V  
Output Voltage: Single pulse 15 kV and more  
Capable Current: DC22A  
Lamp: CERMAX LX175/LX300  
Size, Weight: W112/H81/D45, 350 g

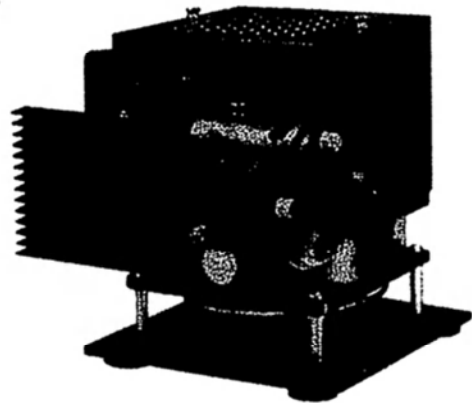


**Xe Illuminator  
Lamp House  
R300-J**

Lamp: CERMAX LX175/LX300 (Not available EX Condense type)  
Cooling: AC230V Forced Air  
Size, Weight: W119/H160/D126, 1.6 kg



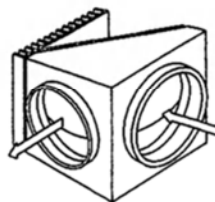
- (1) Lamp access panel fixed screw
- (2) Lamp cathode terminal
- (3) Lamp anode terminal
- (4) Lamp cooling fan AC230V 16VA
- (5) Cooling fan power terminal
- (6) Finger guard
- (7) Heat resistant plate
- (8) Lamp LX-300F



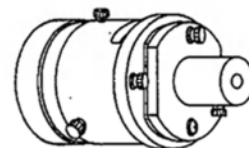
**Option Accessory**

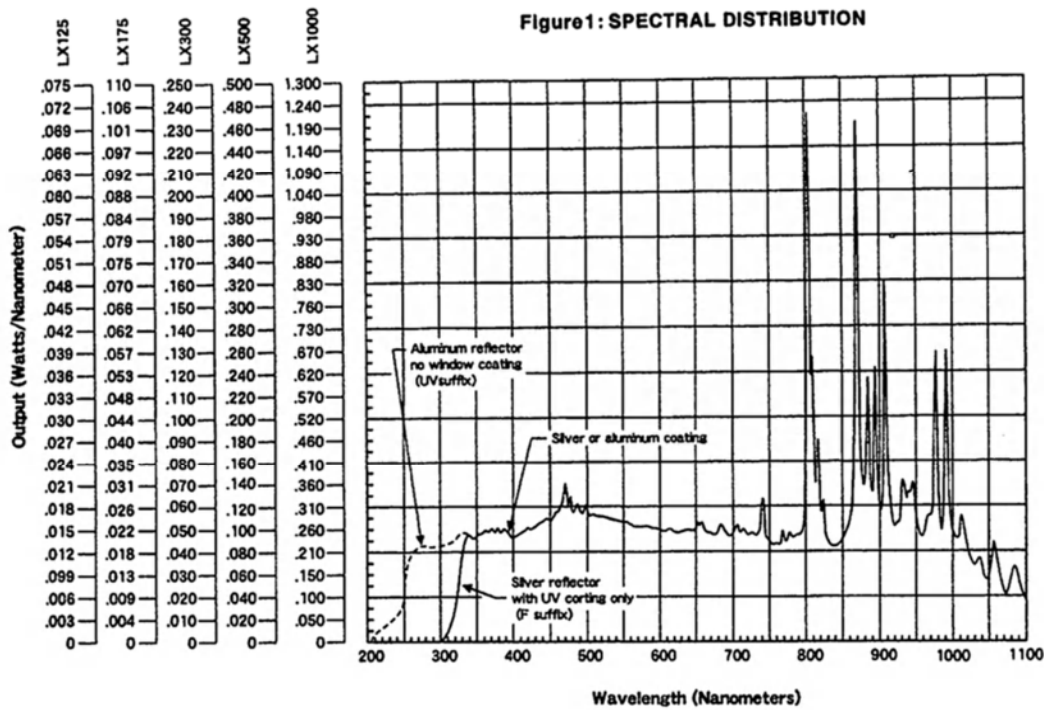
90° reflection mirror unit/Uniform illumination lens unit/  
Light guide condensing unit/liquid fiber and some light  
guides.

Reflection light unit  
**MR 60 / 90**

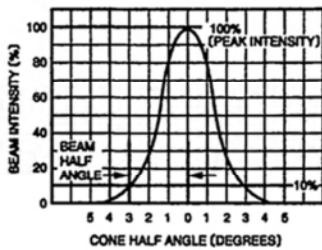


Light guide condensing unit  
**LGQ 30 / 40P**

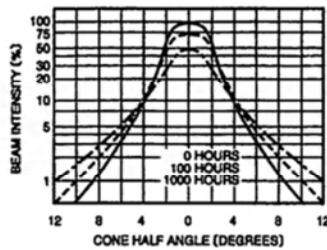




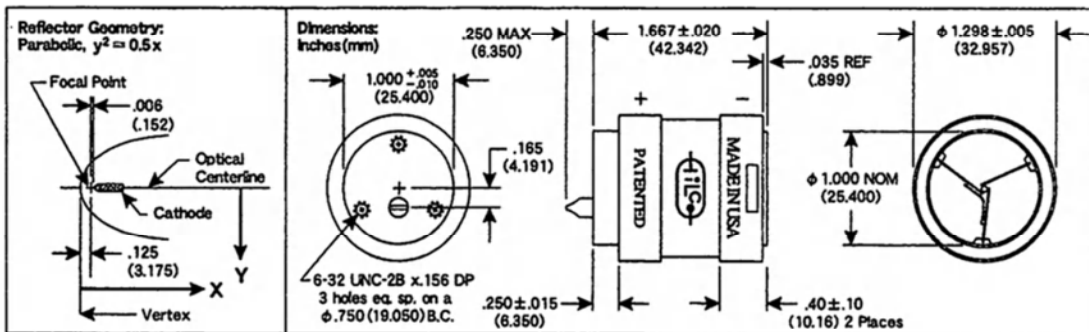
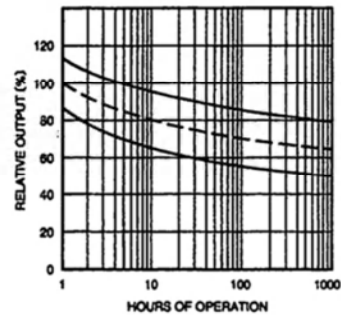
**Figure 2: DEFINITION OF BEAM ANGLE**



**Figure 3: TYPICAL BEAM PROFILES**



**Figure 4: OUTPUT VS. TIME**



**Reflector geometry and lamp body dimensions for a Cermax lamp (LX300F)**